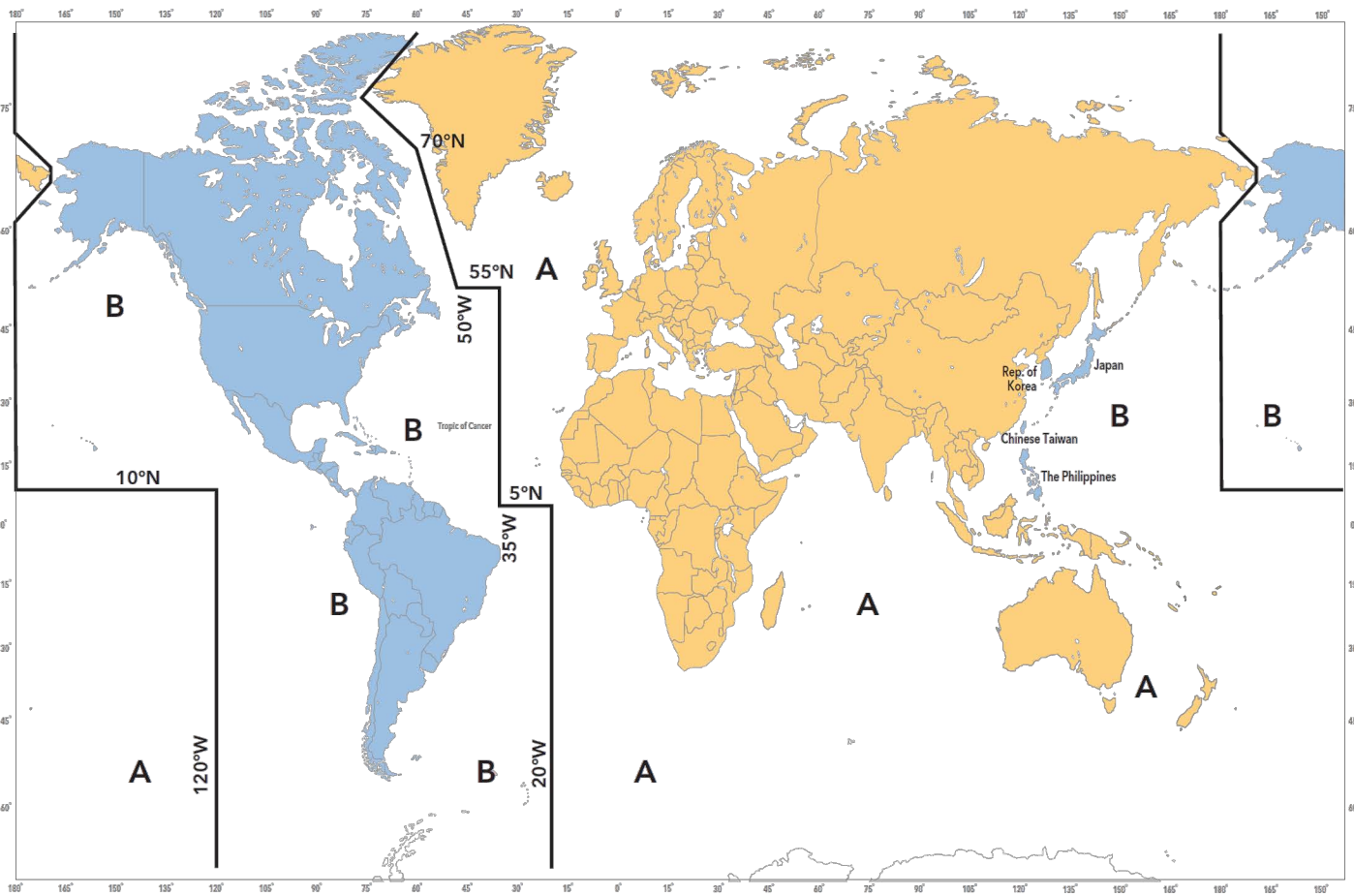


IALA / AISM MARITIME BUOYAGE SYSTEM

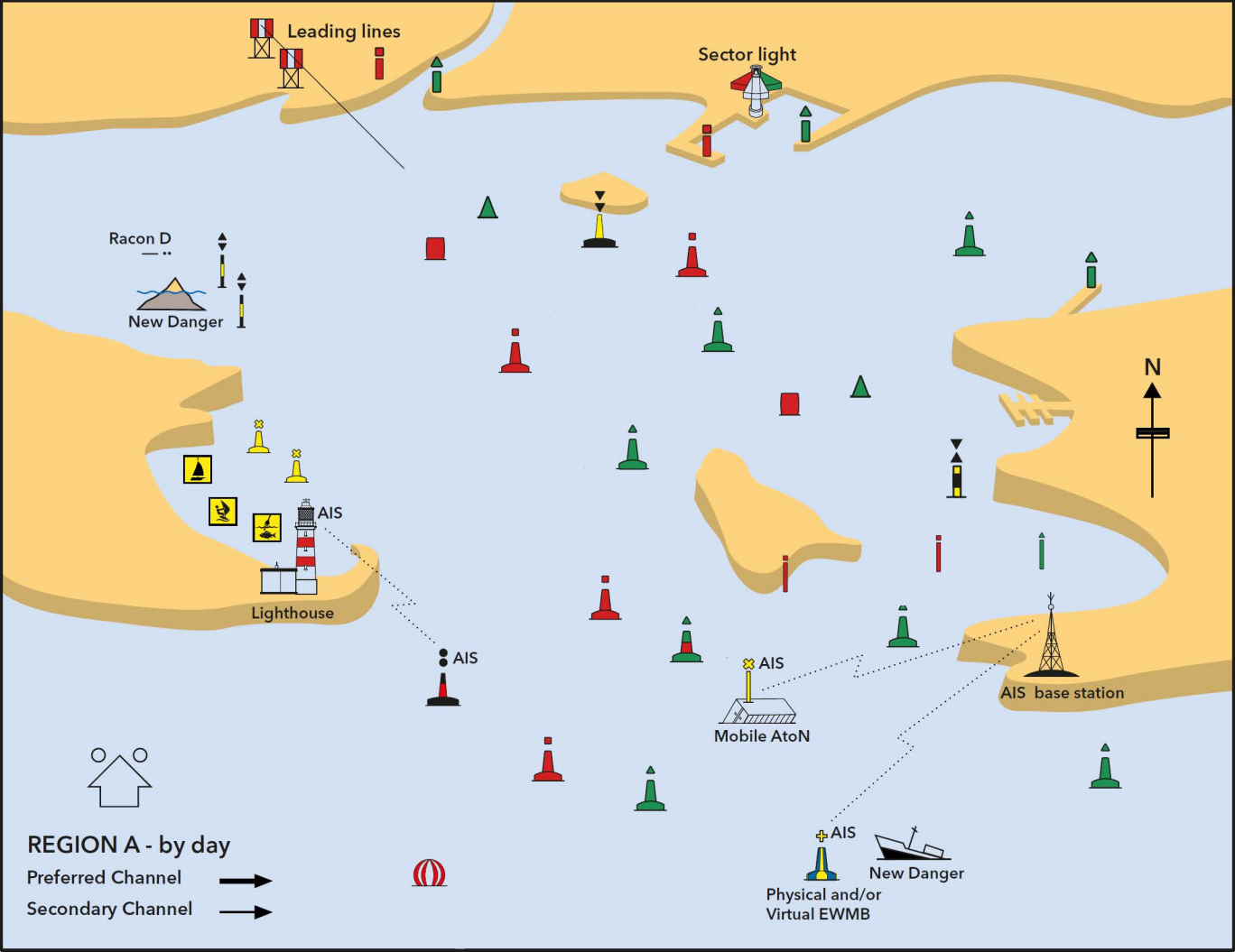
Buoyage Regions A and B



Information believed to be correct at time of issue by IALA (March 2010)

- Not to be used for navigation
- Users should consult current nautical publications for latest status

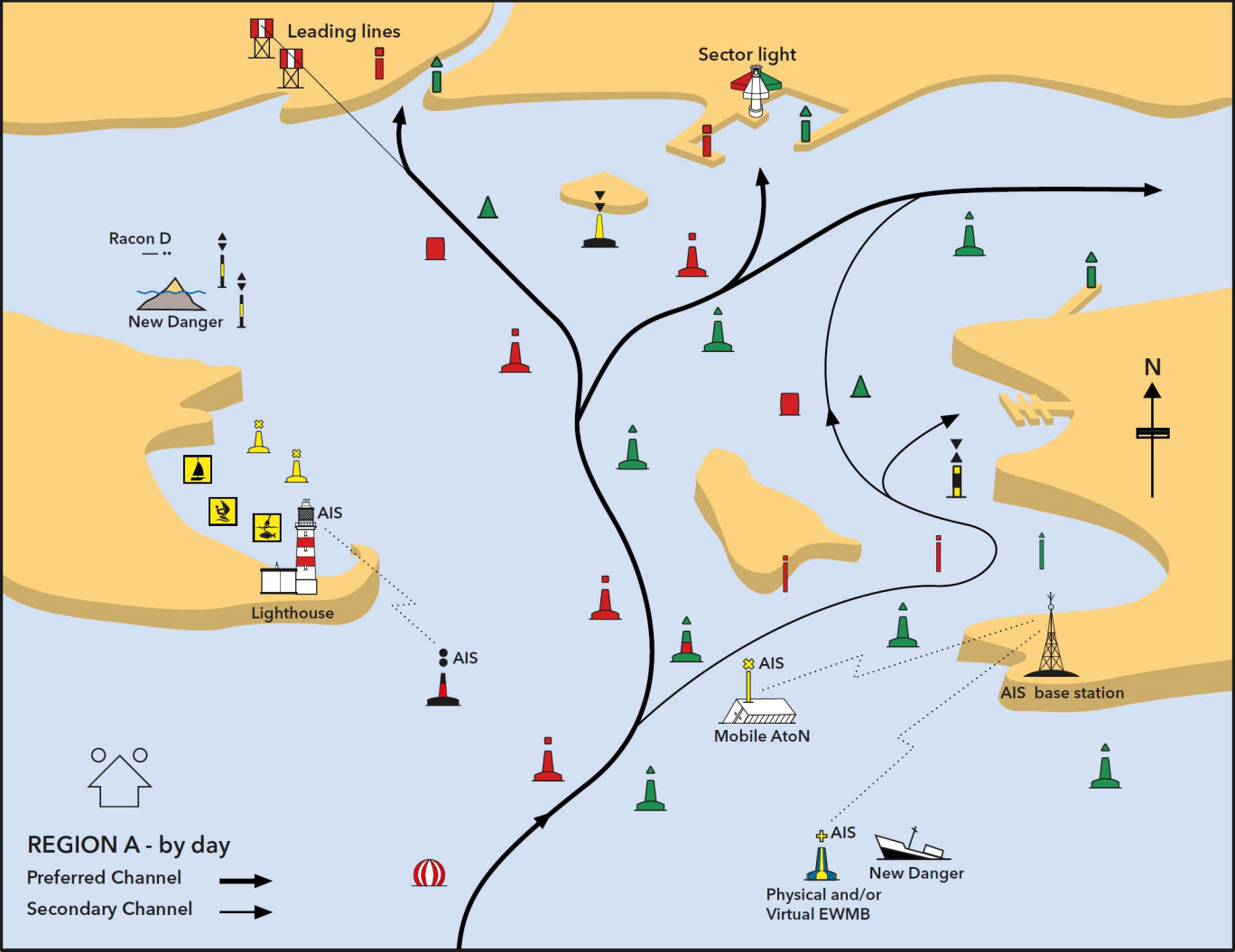


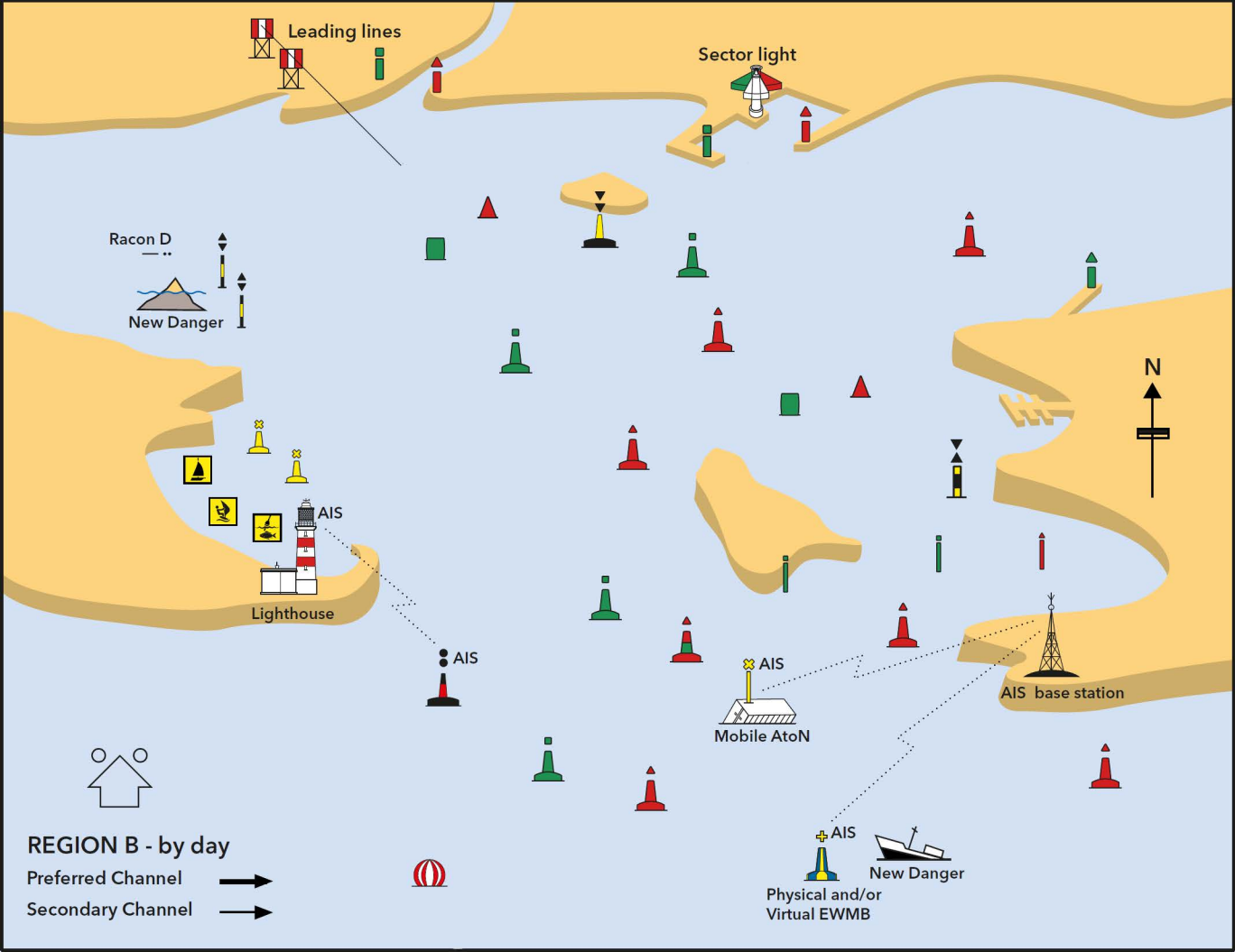


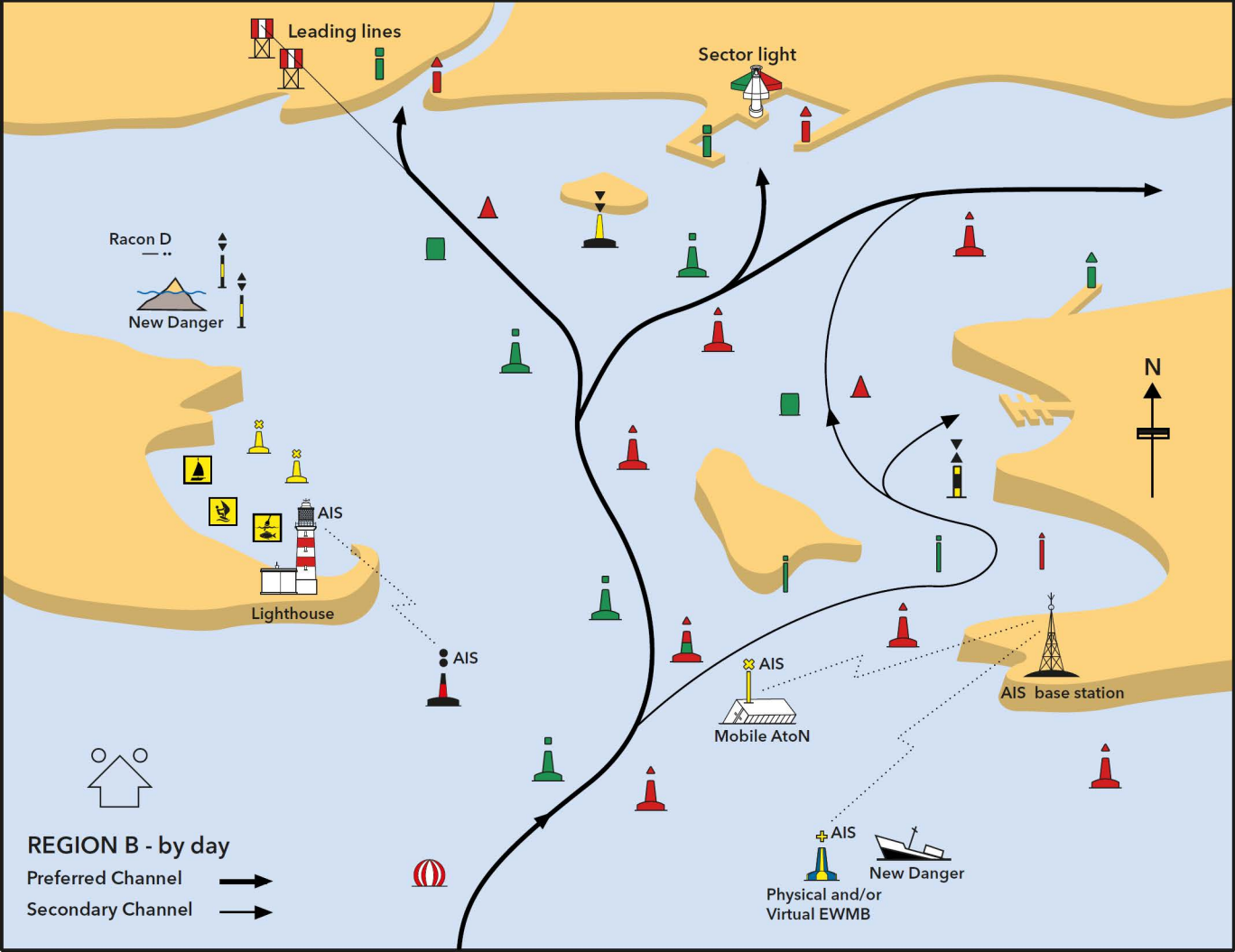
REGION A - by day

Preferred Channel →

Secondary Channel →





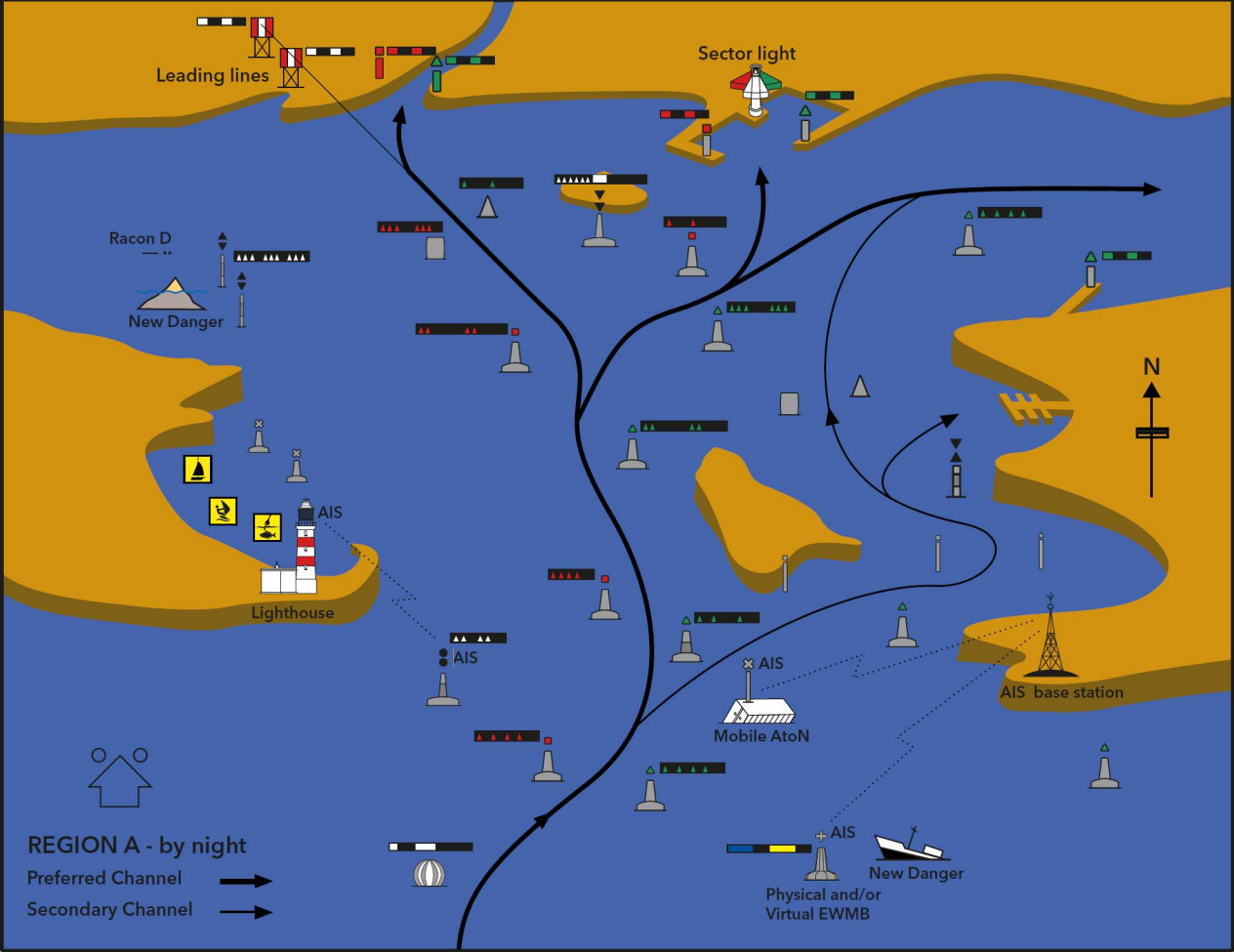


REGION B - by day

Preferred Channel →

Secondary Channel →





Leading lines

Sector light

Racon D

New Danger

AIS

Lighthouse

AIS

AIS

Mobile AtoN

AIS base station

N

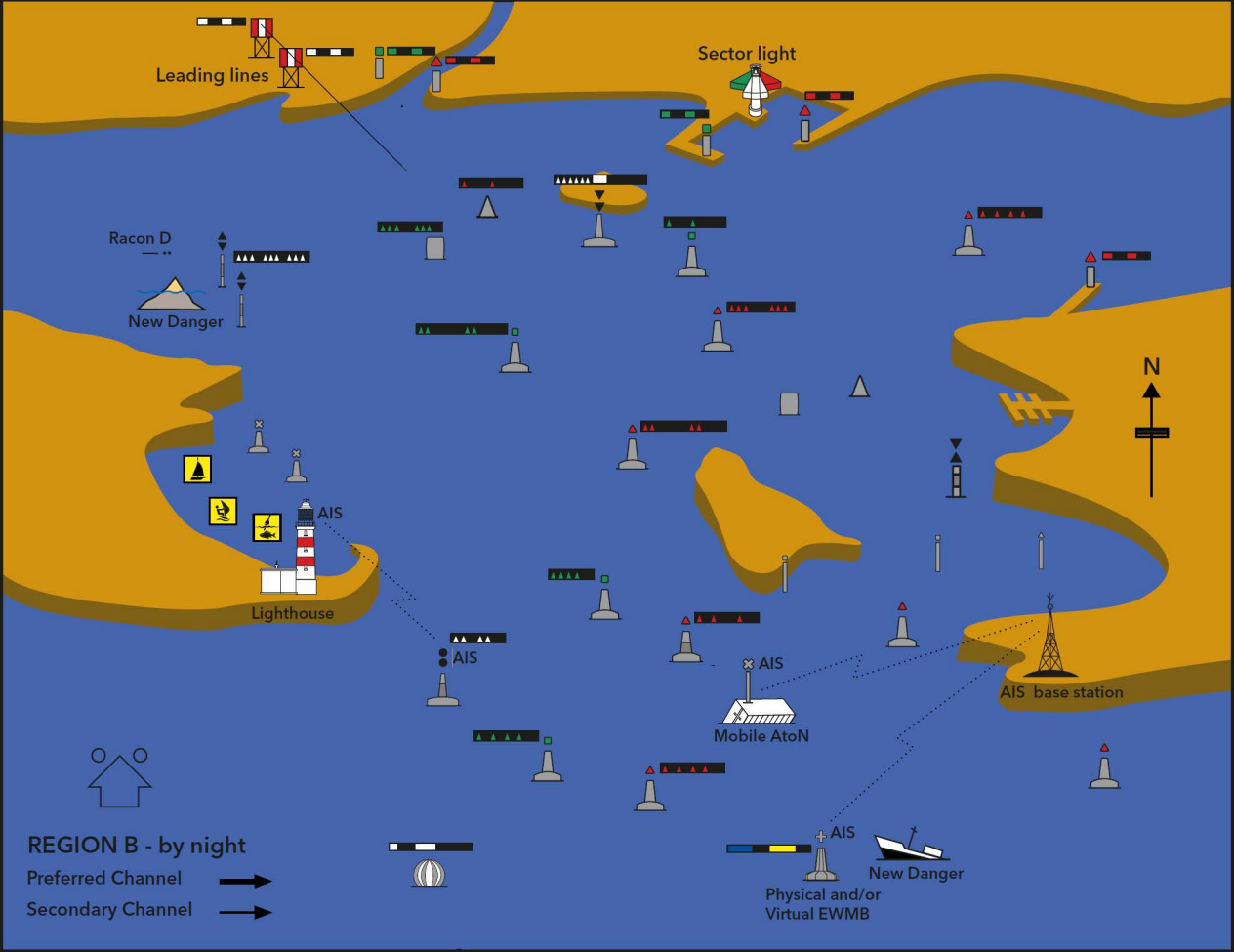
Physical and/or
Virtual EWMB

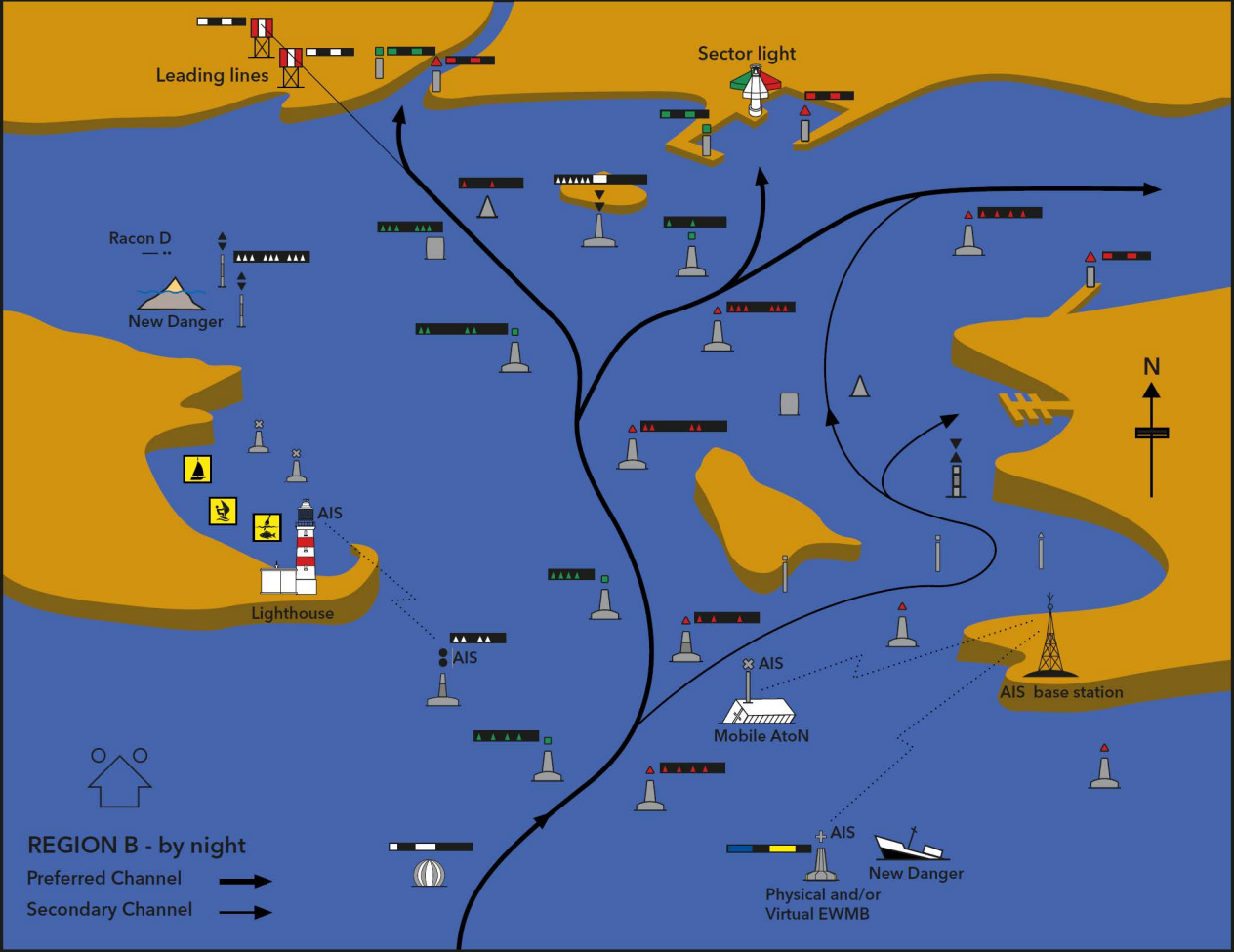
New Danger

REGION A - by night

Preferred Channel

Secondary Channel





Leading lines

Sector light

Racon D

New Danger

AIS

Lighthouse

AIS

AIS

Mobile AtoN

AIS base station

AIS

New Danger

Physical and/or
Virtual EWMB

REGION B - by night

Preferred Channel

Secondary Channel